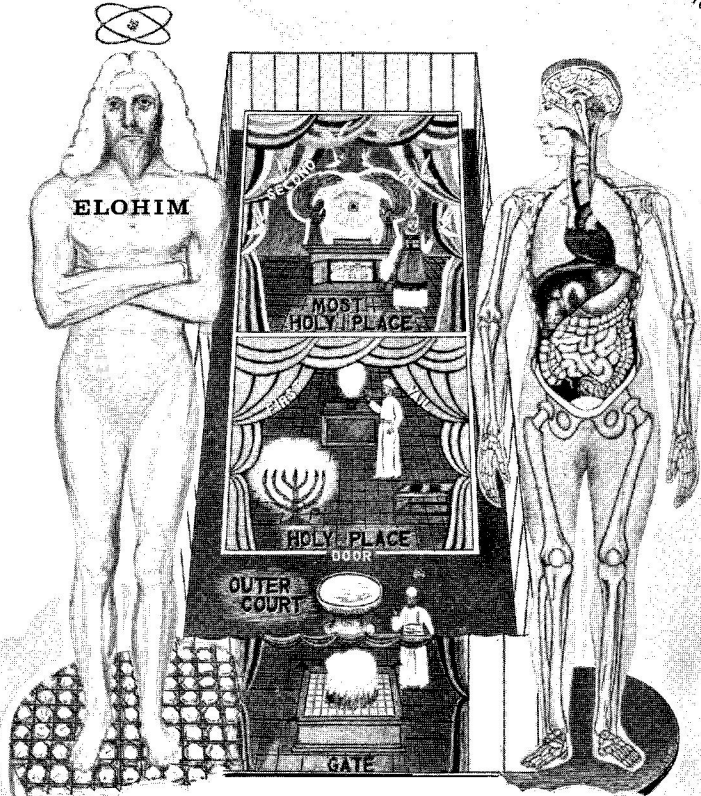




THE ETERNAL YAHWEH MANIFESTED WITHIN THE CLOUD SYMBOLIZING ETERNITY
AYAH ASHER AYAH
 ISAIAH 57:15
 MICAH 5:2



ARCHETYPE PATTERN
 TEMPLE

TABERNALE PATTERN

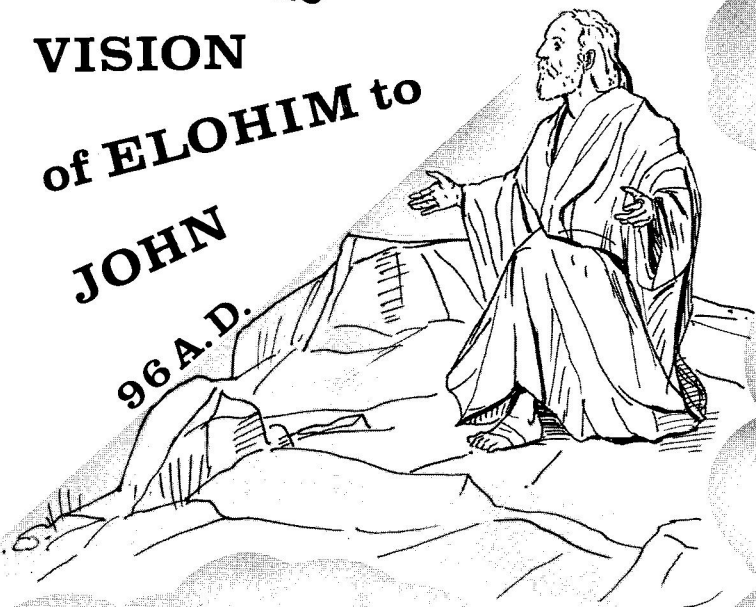
TABERNALE OF MAN

ELOHIM
 The **ARCHETYPE** (original)
PATTERN of the **UNIVERSE**

TABERNALE OF MAN

**Panoramic
VISION
of ELOHIM to
JOHN**

96 A.D.



ISLE OF PATMOS
IN THE
AEGEAN SEA

**MAN MADE IN THE
IMAGE OF ELOHIM (GOD)
BY THE PATTERN
OF THE TABERNACLE**

**Using
THE CORRECT HEBREW NAME
OF THE FATHER YAHWEH**

**Institute Of Divine Metaphysical
Research
P.O. Box 19877
Los Angeles, California 90019**

Copyright 1967
by

INSTITUTE OF DIVINE
METAPHYSICAL RESEARCH

(Revised 9/81)

OUR AIMS

1. To help you find and Know Yahweh our Elohim as HE really is and actually exists (Matt. 24:4, Matt. 11:27, 2 Thess. 1:7-8, Deut. 6:4, 2 Cor. 3:17, John 4:24).
2. To form a nucleus of Universal Brotherhood of Humanity in Yahshua the Messiah without distinction of Race or Nationality, Creed, Sex, Caste, or Color (Acts 17:26, Eph. 5:25-33, Acts 10:34).
3. To investigate the unexplained Spirit Law or so-called Law of Nature and the Powers latent in man (Rom. 8:1-4, John 1:9).
4. To encourage and promote the study of the Scriptures, comparative Religions, Psychology, Philosophy and Modern (practical and occult) Science (2 Tim. 2:15, John 5:39, Rom. 1:19-20).
5. To extirpate current superstition, skepticism, and ignorance (Psa. 19:7, John 8:32).
6. To Learn, Know, and Understand the operation of Yahweh's Eternal Purpose through the Dispensations and Ages (Eph. 1:9-10).
7. To Discern and Avoid being Deceived by Lucifer, the Serpent, the Devil, the Dragon or Satan and his demons, operating the Mystery Of Iniquity on Earth through the Dispensations of time (1 John 4:1-4, 2 Cor. 4:1-7, Rev. 12:8-10, 1 Tim. 4:1-3).
8. To earnestly contend for the Common Salvation and Faith which was once delivered to the Sons or Children of Yahweh (Jude 3, Gal. 4:6, John 1:12, 1 John 3:1).
9. To make known that Yahweh, from the beginning, ordained there is NO OTHER NAME given among men whereby man can be saved, saving THE NAME OF YAHSHUA THE MESSIAH (Acts 4:10-12, 1 Tim. 2:5, Phil. 2:9-10).
10. To inherit ETERNAL LIFE NOW in the Kingdom of Yahshua the Messiah, with the Hope of IMMORTAL GLORIFICATION in the NEW EARTH STATE (Eph. 1:13, 1 John 5:20, Titus 1:2, John 17:3, Col. 1:13).

Watchword -- PEACE

Rom. 5:1
Psa. 29:11
Isa. 55:12

Slogan -- SPEAK THE TRUTH

Zechariah 8:16

We are using the CORRECT HEBREW NAME instead of the TITLE (God), which will be drawn out and explained in more detail throughout this pamphlet. Below we have listed the titles that so-called Christendom use for the names; we are also listing the correct names and title.

INCORRECT TITLES – NOT NAMES:

God	– Father	– 1st Person
Jesus Christ	– Son	– 2nd Person
Holy Ghost	– ?	– 3rd Person

CORRECT NAMES AND TITLE:

Yahweh	– Father
Elohim	– Word or Son
Yahshua	– Holy Spirit (or Ghost)

YAHWEH, the proper name of the God of Israel, is composed of four consonants (YHWH) in Hebrew and is therefore called the tetragrammaton. (TETRAGRAMMATON, the four-lettered name for the Hebrew God pronounced Jehovah through misapplication, dating back to 1270, of the vowels of Adonai (Lord) to the consonants J,H,V,H,). The correct pronunciation is Yahweh.

Also we are using two versions of the Holy Bible, but in both versions we are using the Correct Name. The two versions we are using will be specified by letters, such as:

King James Version or K.J.V.

Holy Name Bible or H.N.B.

The Holy Name Bible, revised by A.B. Traina
The Scripture Research Association, Inc.
1125 Stuyvesant Avenue
Irvington, New Jersey

THE CORRECT HEBREW NAME OF THE FATHER YAHWEH

Yahweh spoke to Abraham, Isaac and Jacob, or in other words, the Patriarchs long BEFORE the time of Moses, (but they never WROTE or DOCUMENTED any of their communications they had with Yahweh, neither did they KNOW His true NAME); this was done verbally so, or through Visions to them as is stated in *Exodus 6:3-5, H.N.B.*, thusly: “And I APPEARED unto Abraham, unto Issaac, and unto Jacob as El-Shaddi (Almighty Provider), but by MY NAME, YAHWEH, was I NOT KNOWN TO THEM. And I have also established My COVENANT with them, to give them the land of Canaan, the land of their pilgrimage, wherein they were strangers. And I have also heard the groaning of the children of Israel, whom the Egyptians keep in bondage: and I have REMEMBERED MY COVENANT.”

Yahweh FIRST APPEARED (in a vision), in the form of Elohim, as an angel, IN THE MIDST OF THE “BURNING BUSH” in the Wilderness to Moses, the shepherd with the ROD in his hand (*See Ex. 3:2, Ex. 4:2-7, H.N.B., K.J.V.*).

As Moses approached to investigate the BURNING BUSH, “YAHWEH ELOHIM called unto him out of the MIDST OF THE BUSH, and said, Moses, Moses! And he said, Here am I. And He (Yahweh Elohim) said, Draw NOT nigh hither: put off thy shoes from off thy feet; for the PLACE whereon thou standest is HOLY GROUND. Moreover He said I am the Elohim of thy father, the Elohim of Abraham, the Elohim of Isaac, and the Elohim of Jacob” (*Ex. 3:4-6; H.N.B.*).

Yahweh Elohim’s further introduction to Moses: “And Elohim said unto Moses, AYAH-ASHER-AYAH (I WILL BE WHAT I WILL TO BE). And He said, Thus shalt thou say unto the children of Israel, I WILL BE hath sent me unto you. And Elohim said moreover unto Moses, Thus shalt thou say unto the children of Israel, Yahweh, the Elohim of your fathers, the Elohim of

Abraham, the Elohim of Isaac, and the Elohim of Jacob, hath sent me unto you: this is MY NAME for ever, and this is My MEMORIAL unto all generations” (*Ex. 3:14-15, H.N.B.*).

The same thing that Moses had written in the Law, Torah or Pentateuch is confirmed by Paul in 1 Corinthians 15:26-28, H.N.B., thusly:

“The last enemy that shall be destroyed is death. For He (Yahweh – Elohim) hath put all things under His feet. But when He saith, ALL THINGS ARE PUT UNDER HIM, it is manifest that He is excluded, which did put all things under Him. And when all things shall be subdued unto Him, then shall the Son (Yahshua) also Himself BE subject unto Him that put all things under Him, that YAHWEH MAY BE ALL IN ALL.”

INTRODUCTION

It is vitally important and absolutely necessary that every man know how he is made in the Likeness and Image of God in order for him to obtain the inheritance of Eternal Life. Ignorance of the reality of this can rob a man of his rightful inheritance and doom his Soul to Eternal Damnation. God has painstakingly showed us in a very simple one, two, three fashion that we are Gods (*Psa. 82:6, K.J.V.*) Even a fool can know this (*Isa. 35:8, K.J.V.*) if he will follow the simple Three-fold Pattern that God has given. EVE, the first physical woman was deceived in the Garden of Eden because she did not know this, and that great wise and beautiful angelic creature, Satan (*Gen. 3:5, Ezek. 28:12-19, Rev. 12:7-17, K.J.V.*), whom God has created as His Adversary virtually sent her on a wild goose chase to try to become something that she was already; and please be advised that Jesus was crucified or murdered because He said that He was the Son of God manifested in a physical body (*John 10:36, Mark 14:61-64, 1 Tim. 3:16, K.J.V.*). This lack of knowledge was DEATH to Eve, but ETERNAL LIFE to Jesus Christ who was raised from the dead a Quickening Spirit.

Before we go any further with this discourse, let us pause and reflect upon the Unity of the Spirit (or Godhead) and the True Name of our Eternal Creator which is vitally important in explaining our subject. The Name of the Father who is Pure Spirit (*John 4:23-24, H.N.B., K.J.V.*) without any descriptive shape or form (*Deut. 4:12, K.J.V., H.N.B.*) and in whom everything abides and exists (*Acts 17:28, H.N.B., K.J.V.*) and from which everything originated is YAHWEH (see illustrated on the front cover, The Eternal Yahweh manifested within the Cloud, symbolizing Eternity). He is invisible (*John 1:8, H.N.B., K.J.V.*) INSCRUTABLE and INCOMPREHENSIBLE in this state or condition, hence in order for Him to make Himself discernible and scrutable and comprehensible to mankind, Yahweh took on a descriptive shape and form, the Incorporeal Form of a man, a Ghost Form which could be seen only in visions but not with

man's naked eye (*Ex. 24:9-10, Ezek. 1:26, Isa. 6th chapter, Acts 9th and 22nd chapters, Rev. 1:13-20, H.N.B., K.J.V.*). This shape and form of Yahweh is called ELOHIM or the Word of Yahweh, or the Holy Ghost (see front cover, marked Elohim). Then after the Angelic and physical creations were created and fashioned by Elohim, (*John 1:1-3, Col. 1:15-17, H.N.B., K.J.V.*) and Yahweh had carried out His preconceived Purpose and Plan on earth through mankind for four thousand (4000) years, He (Yahweh our Elohim) walked around on the physical earth that He had created, in a fleshly body which we call Yahshua the Messiah (*1 Tim. 3:16, John 1:14, H.N.B., K.J.V.*) fulfilling the Law and Prophets (*Matt. 5:17*).

These Names, Yahweh, Elohim and Yahshua the Messiah, will henceforth be used throughout this booklet, but be mindful that all three are the one and self-same Divine Eternal Spirit (*1 John 5:7, K.J.V.*).

Now we will proceed to explain how Yahweh has revealed to us that we are made in His Likeness and Image. After Yahweh had promised Abraham that through his seed, Isaac, He would bless all the nations of the world (*Gen. 12:1-3, K.J.V., H.N.B.*) and would multiply his seed as the sands of the sea and as the stars of Heaven, He caused his posterity to go into Egypt where they were held in bondage to Pharaoh (a figure of Satan) for over four hundred (400) years.

He sent Moses, His servant to deliver them and He manifested that He was with them by many wondrous works and signs, and after they (the Israelites) had assembled in the Wilderness of Sinai, He (Yahweh) called Moses, Aaron, Nadab and Abihu and seventy (70) of the elders of Israel up into Mount Sinai and there they SAW ELOHIM IN A VISION and Moses described Him as Having a body, hands, feet, etc. (*Ex. 24:9-11, K.J.V., H.N.B.*). Later on, Moses ALONE and by HIMSELF (see Moses in Mount Sinai on back cover) was called up into the MIDST of the CLOUD which covered the Mount (*Ex 24:16-17, H.N.B., K.J.V.*) and Elohim manifested Himself to Moses as an Intangible three-fold Taber-

nacle (see Tabernacle Pattern illustrated on the front cover), that is, He instantaneously transformed Himself from His Super Incorporeal Form into a completely furnished three-fold Tabernacle which He told Moses was a Pattern (*Ex. 25:40, Heb. 8:5, H.N.B., K.J.V.*).

He commanded Moses to build a physical Tabernacle in the Wilderness of Sinai just exactly like the Intangible or Spiritual Tabernacle that he saw in the Mount in the VISION. During his Vision Moses was also shown (a re-run of) the Creation of the physical universe and he looked right at Elohim make the man, Adam on the sixth (6th) day out of the dust of the earth, and he wrote that man was made in the Likeness and Image of Elohim (see and compare the Tabernacle of Man with Elohim, the Archetype Pattern on front cover) because he could immediately see the similarity of their forms and make-up.

Moses therefore SAW Elohim (Yahweh in shape and form of a man) and Adam, a physical man created out of the dust of the earth in the same Vision and consequently could speak with authority of their twin-like appearance, the only difference being that Elohim was Spirit and Adam was physical. Now we must also say that though Adam's body was formed of the dust of the earth (which originally came from Pure Sprit or Yahweh) his Soul was the breath of Life which was breathed into his nostrils by Elohim, hence Adam was both physical and spiritual or he was a spiritual man within a physical man.

If therefore Elohim manifested Himself as a three-fold Tabernacle to Moses and Adam was made in the Likeness of Elohim, it goes without saying that the man, Adam was a Tabernacle, as is all of the generations of mankind (*1 Cor. 6:19, 2 Cor. 5:1, 2 Pet. 1:13-14, H.N.B., K.J.V.*). Since Moses was instructed of Yahweh to make Him a Tabernacle that He might dwell among His people and He did dwell within the cloud between the wings of the cherubims above the Mercy Seat (*Ex. 25:8-9, 22, H.N.B., K.J.V.*)

this then furnishes us with concrete proof that Yahweh inhabits or dwells within each of us, and is . . . not way off beyond the Sun, Moon and Stars (truly, we abide in Him, and He abides in us).

In addition it furnishes us with concrete proof that Yahweh was manifested in a physical body and walked around on this earth plane (*1 Tim. 3:16*) and is our Saviour or the Atonement for our sins having offered His precious blood to redeem us. Having a definite knowledge of these facts would go a long way towards making us believers in Yahweh, Elohim and Yahshua the Messiah rather than having us confused, skeptical and declaring that Yahweh is dead! Since His Spirit is our life, we would not be alive if Yahweh were dead.

Now let us proceed to a point by point polytechnical comparison of the Mosaic Tabernacle with the Physical Body so as to leave nothing desired in offering proof of how man is made in the Likeness and Image of Elohim.

COMPARISON OF MOSAIC TABERNACLE AND MAN'S BODY

If you the reader will refer to the chart entitled, "Man Made In The Image Of Yahweh by the Pattern of the Tabernacle," you will be able to follow the correlative structure and function of the Mosaic Tabernacle with the anatomy and physiology of man's body. The illustration on the left is the Mosaic Tabernacle; the illustration in the center, of course is the physical body with the head, chest and abdominal cavities exposed showing the positioning of the internal organs. The illustration on the right shows an interchanging of the organs of the physical body with the furnishings of the Mosaic Tabernacle to unmistakably show the detailed and polytechnic comparison.

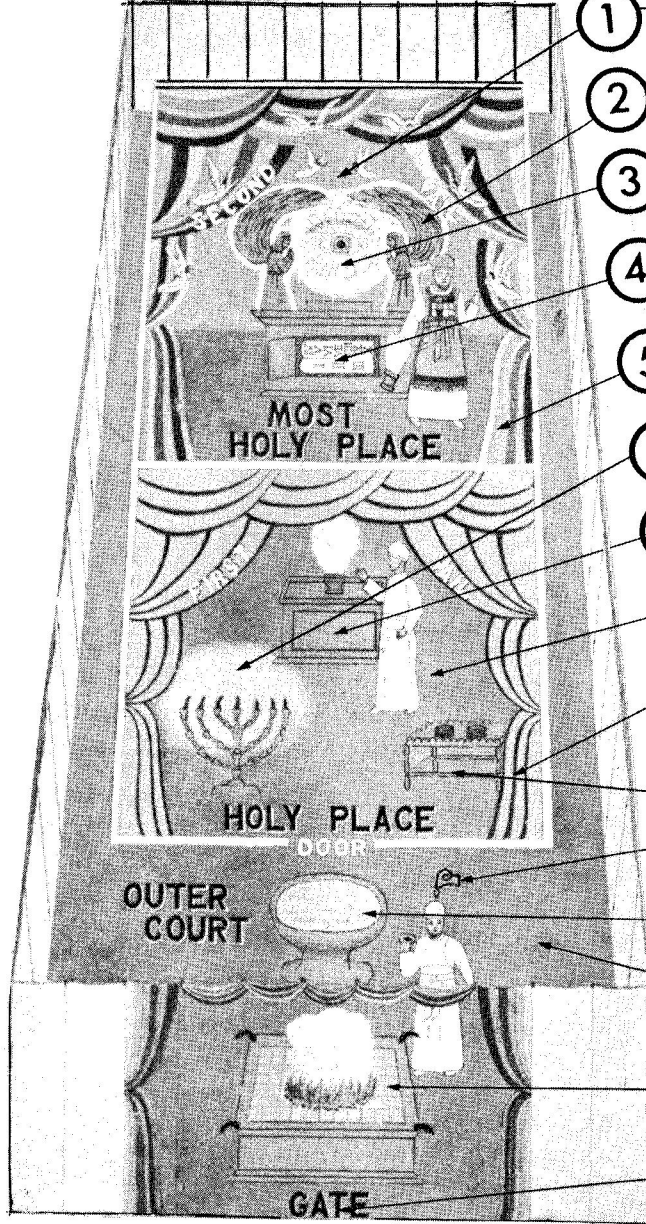
Each corresponding number denotes the same structure in each illustration (page 10-11), and the numbers (denoted by #) will be inserted where ever necessary throughout our discourse so as to not break the continuity of thought.

1 – Is the Most Holy Place of the Mosaic Tabernacle. # 2 – Shows the two Archangels or Cherubims of Glory over-shadowing the Mercy Seat with their wings touching in the middle. # 3 – Illustrates the Cloud dwelling between them and above the Mercy Seat. The Cloud denotes the dwelling place of Yahweh (*Ex. 25:22, H.N.B., K.J.V.*) and the large eye signifies His ever presence and attention to the deeds of man (*Prov. 15:3, H.N.B., K.J.V.*). In the Ark of the Covenant beneath the Mercy Seat, (# 4) one sees the two tables of the Mosaic Law placed therein. (The door in front is just for the purpose of illustrating the two tables of the commandment law). Actually there was a lid on top which formed the Mercy Seat.

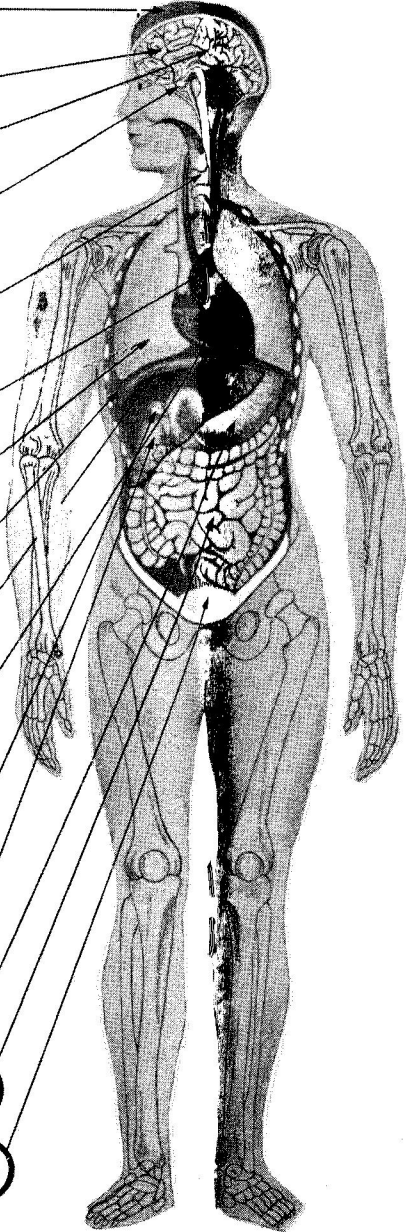
These two Archangels represented Michael, a warrior who was always sent to carry out some action for Yahweh, and Gabriel who was sent to deliver messages (*Jude 9, Rev. 12:7, Dan. 8:16, Luke*

MAN MADE IN THE IMAGE OF ELOHIM BY THE PATTERN OF THE TABERNACLE

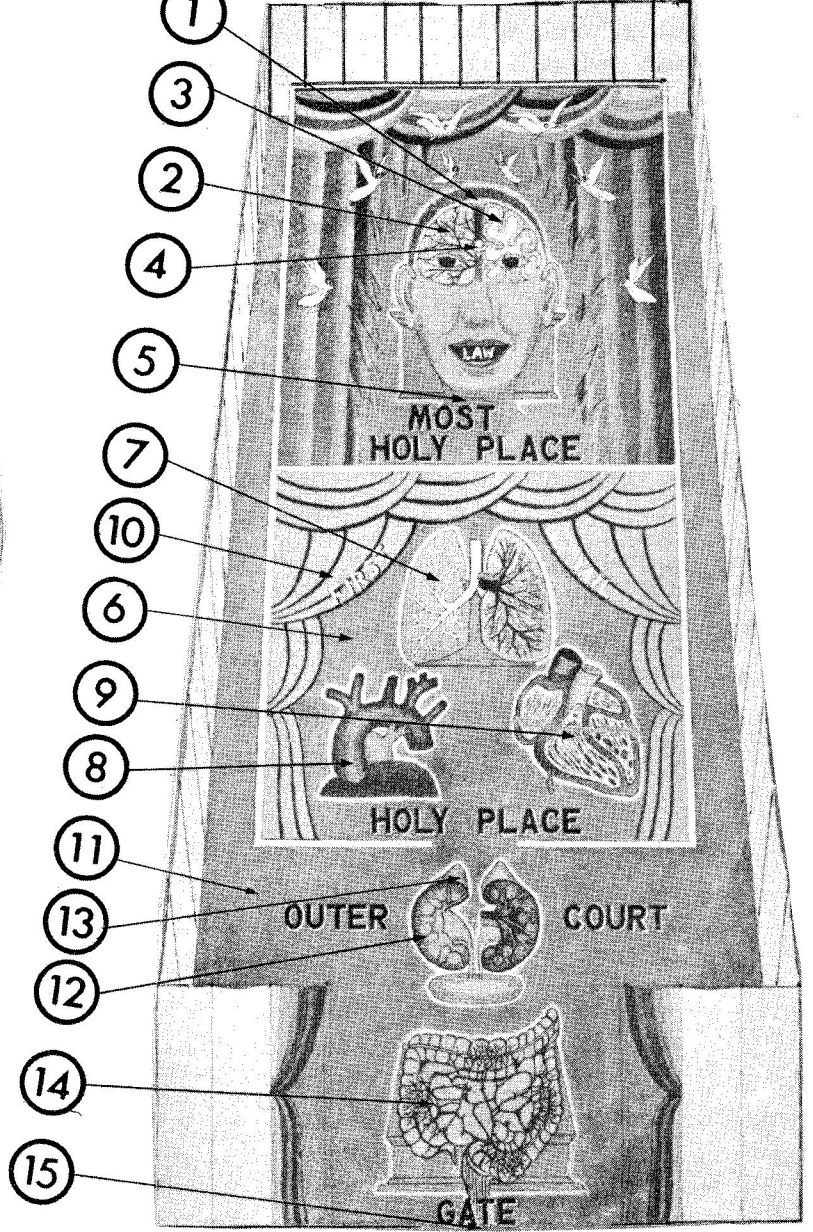
TABERNACLE PATTERN



TABERNACLE OF MAN



MAN BY THE PATTERN



THE BONE STRUCTURE OF A MAN REPRESENTS PILLARS, BARS & BOARDS IN THE TABERNACLE

1:26, *H.N.B., K.J.V.*) Furthermore, the invisible presence of Yahweh in the Cloud was signified by the manifestation of the Shechinah (which really was a vision of Elohim seen by the High Priest on the Day of Atonement).


= 1 – The cranial or head cavity of man’s physical body corresponds with the Most Holy Place of the Mosaic Tabernacle.

≠ 2 – The right and left halves of the brain which come together in the mid-line correspond with the two Archangels, and the two main functions of the brain. One, in carrying out some action (motor function) corresponds to the duties of Michael, and two, the sending and receiving of messages (sensory function) corresponds with the duties of Gabriel.

3 – The brain itself is composed of gray and white matter likened unto the Cloud which over-shadowed the Mercy Seat, and it is by means of our brain that we are in touch with, and minutely aware of everything going on around us. It is really like one great big Cycloptic Eye in our heads, (even the two eyes see as one eye). The Pineal gland located in the center of the Brain was likened unto a Cycloptic Eye by the ancients, or Greek Mythologists and also was thought to be the seat of all sensations.

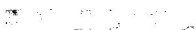
4 – The two Lobes of the Pituitary Gland (the master gland of the body) corresponds to the two tables of the Mosaic Law, and they are placed in a bony receptacle in the base of the brain and are covered over by a covering just as the Lid covered the Ark of the Covenant. In our diagram on the right you will see the word LAW in the mouth of the figure. This is to show the close approximation of the pituitary gland to the roof of the mouth, and it is out of the mouth that the LAW proceeds. Malachi wrote: “The law of truth was in his mouth” (*Mal. 2:6, H.N.B., K.J.V.*).

The vision of the Shechinah seen in the Cloud in the Most Holy Place of the Tabernacle can be correlated with the configuration

of the blood vessels supplying the brain which take the shape of a stick-figure  of a man (Elohim).

5 – The second Vail of the Mosaic Tabernacle divides the Most Holy Place from the Holy Place and is blue, purple and scarlet in color. This corresponds with the neck of man's physical body which divides the head or cranial cavity from the chest cavity. All the blood vessels passing to the head are gathered together in the neck in one great profusion, the veins (colored blue to denote impure blood), the arteries (colored red or scarlet to denote pure or oxygenated blood), and the presence of the iodine filled thyroid gland (iodine means violet or purple) denotes the purple of this dividing Vail of the neck.

6 – In the Holy Place of the Mosaic Tabernacle, one sees the High Priest standing at (# 7) the Golden Altar of Incense burning incense which consisted of four principle ingredients called stacte, onycha, galbanum and frankincense which were sweet odoriferous spices (*Ex. 30:34-38, H.N.B., K.J.V.*). This Incense perfumed the entire Tabernacle and ascended through the second Vail into the Most Holy Place where Yahweh dwelled in the Cloud above the Mercy Seat, and was a sweet smelling savour to Him for it represented the intercession made by the Holy Ghost (Elohim) to the Father (Yahweh).

8 – The seven branched Golden Candlestick can be seen on the left in the Holy Place and it gave Light unto the Sanctuary so that there was never any darkness there. It was extinguished at nine o'clock in the morning when the daylight illuminated the Sanctuary; it was trimmed and made ready for the re-lighting at three o'clock in the afternoon when daylight began to fade, and it would burn all through the night until the next morning. All of the seven branches of it proceeded out of the main stem on either side, and it was filled with oil from the main stem. 

9 – The Golden Table of Shewbread can be seen on the right

side of the Holy Place with its two rows of bread (six loaves on either side).

It is a four-sided furnishing with a golden crown around the border of it. The High Priest ate daily of the bread on the Table of Shewbread which was kept ever present for him. This was his daily sustenance as well as the meat offering and drink offering of which he partook.

Comparing the Holy Place of the Tabernacle with #6 the chest cavity of the Physical body, one finds (# 7) the lungs serving the same capacity or function as the Golden Altar of Incense. To be real polytechnical, one finds that the larynx situated above the windpipe or trachea has two superior cornu (horns) and two inferior cornu just as the Golden Altar of Incense had four horns on it – one at each corner. The air which we breathe is composed mainly of four ingredients, nitrogen, oxygen, carbon dioxide and hydrogen, (as aqueous vapor) which corresponds to the four principle ingredients of the incense burned on the Golden Altar of Incense. Yes, and air or oxygen is burned in our bodies for the process of oxidation which is the uniting of oxygen with other substances is a burning process.

It need not be said that breathing of good fresh air is a sweet smelling savour unto all of the tissues of the body and that it fragranizes all of the body just as the Incense did the Tabernacle. The brain corresponding to the cloud where Yahweh dwelled is especially expectant and desirous of this air or oxygen as it is the most vulnerable of all the body tissues when it comes to oxygen lack (remember the incense wafting through the second Vail into the Most Holy Place). Let us remind the reader at this point that Yahweh forbade anyone to duplicate the Holy Incense and only the High Priest knew how to make it (*Ex. 30:37-38, H.N.B., K.J.V.*). Doesn't this compare beautifully with the fact that NO ONE has yet been able to determine the exact composition of Air which only Yahweh knows!

8 – The seven branched Golden Candlestick corresponds with the Aorta, that great blood vessel which comes off the heart and has just seven (7) branches which distribute oxygenated blood to all the body.

Note, we shall designate the seven branches of the Candlestick by letters to differentiate or distinguish from our regular use of numbers. (a) The innominate artery coming off of the arch of the aorta typifies the main stem of the candlestick and it gives off (b) the right common carotid and (c) right subclavian arteries; (d) the left common carotid and (e) left subclavian also come off at the arch of the Aorta; while the (f) right and (g) left coronary arteries come off of the ascending Aorta. The descending Aorta in its thoracic portion gives off numerous branches which are too small to diminish its size. The blood circulating through this great vessel, the Aorta, gives life unto the whole body continuously day and night just as the oil burning in the Golden Candlestick furnished continual light unto the Tabernacle. Even the flickering of the light of the candlestick can be likened unto the pulsation of the Aorta and its branches.

9 – The Golden Table of Shewbread compares with the four-chambered heart. As the Golden Candlestick was placed on the one side of the Holy Place, and the Golden Table of Shewbread on the other side, so is the heart placed more to the left side and the Aorta more to the right side of the body. The four chambers of the heart compares with the four corners of the Table of Shewbread. The bread placed in two rows on the table signifies the two halves of the heart, the right and the left. The golden crown around the border of the Table corresponds to the coronary (which means crown) vessels encircling the heart, and the heart is truly one's daily bread for it is by the constant beating of the heart that life is sustained.

10 – The First Vail separated the Holy Place from (# 11) the Outer Court and entrance was by the door seen in our diagram on

the left. Immediately before the door is (# 12) the Brazen Laver which contained water for washing the sacrificial animals before placing them on (# 14) the Brazen Altar of sin offering which is located just inside (# 15) the Gate of the Outer Court. The Brazen Laver had a foot or pedestal on which it stood, and the Brazen Altar was a four-cornered furnishing with a horn on each corner where blood was placed during the sacrificial ceremonies. Over the head of the High Priest is pictured a vessel containing (# 13) the Holy Anointing oil which was poured on the head of the Priest and signified anointing by the Holy Spirit or Quickening.

In our diagram on the right one can see that (# 10) the Diaphragm forms the First Vail and separated the chest cavity from (# 11) the abdominal cavity which is the Outer Court of the physical body and that (# 12) the two kidneys which are ordinarily located in the right and left flanks are brought together to form a perfect configuration of the Brazen Laver. One might ask the question WHY then are they (the two kidneys) separated in the physical body? It is to prove conclusively since the kidneys with water placed therein represent the Red Sea in the Migratory Pattern that Yahweh really did DIVIDE the waters of the Red Sea for Moses and the Israelites. (The reader will find a fuller explanation of this under the subject of the Excretory System and the Pattern).

The foot of the Brazen Laver is formed by the two ureters descending from the kidneys to the urinary bladder where the urine is held until passage. The protuberances above each kidney represents (# 13) the Adrenal Glands which contain the substance adrenalin which quickens the various muscles and other tissues of the body just as the Holy Anointing Oil did the High Priest. The picture-frame configuration of the Large Intestines represent the Brazen Altar, and the small intestines where most of the food is digested (burned) are located within this frame-work. The food thus becomes the sacrifice which is burned on the Altar.

The Gate of the Outer Court corresponds with (# 15) the rectal

opening by which all waste products of digestion are eliminated, just as the skin, hair and other portions of the sacrificial animals were taken without the camp and discarded or burned.

The bone structure of man's physical body represents the pillars, bars and boards which were the supporting structures of the Tabernacle. The Tibia bone in the leg or Femur bone in the thigh are good examples of a pillar which made up the Tabernacle; the flat bones such as the Scapula, and bones of the Skull are good examples of boards of the Tabernacle, whereas the short, stubby bones as the Metacarpal bones of the hand, the Metatarsal bones of the foot are good examples of the bars of the Tabernacle.

This then has been a polytechnical comparison of the Mosaic Tabernacle with the Tabernacle of man's body, but please bear in mind that the physical or visible things point to the invisible or spiritual things (*Rom. 1:19-20, H.N.B., K.J.V.*). Yes, Yahshua the Messiah was a physical man just like you or I but He was really Yahweh who is Spirit manifested in a visible form, therefore all of the component parts or members of our physical body are physical expressions of Spiritual things, such as, Intelligence, Wisdom, Knowledge, Love, Beauty, Justice, Foundation, Power and Strength which are the Divine Attributes or members which make up the Spiritual Super Incorporeal Body of Elohim.

In summation let me say that this simple Yahweh given Pattern not only fits the physical body, but everything in the cosmographical make-up of this Universe. The smallest bit of matter that man has any knowledge of, the Atom, is basically composed of a Proton, Neutron and Electron, corresponding to the Most Holy Place, Holy Place and Outer Court of the Mosaic Tabernacle, and the Scientists to date have found only nine sub-atomic particles which make up the Atom, which further compares with the nine furnishings of the Tabernacle (the Ark of the Covenant with an Archangel on either side, being made of one-piece was a three in one (3 in 1) furnishing in the Most Holy Place; the Golden Altar of

Incense, Table of Shewbread and Golden Candlestick were the three furnishings in the Holy Place, and the Brazen Laver, Holy Anointing Oil and Brazen Altar of Sacrifice were the three furnishings in the Outer Court).

The minute Cell whether animal or plant is three-fold, being composed of a nucleolus, a nucleus and cell body. ALL matter is either a gas, liquid or solid, so no matter which way one turns this Divine Pattern has the situation covered. WHY? Because it is Elohim Himself, for He is the Archetype or Original Pattern of everything, and the Pattern proves His existence and manifests His ETERNAL PURPOSE throughout the Dispensations and Ages.

We have already explained how that Moses SAW Elohim, the Super Incorporeal Form of Yahweh, instantaneously transform Himself into a three-fold Tabernacle, that is to say, the Tabernacle was drawn right out of the Super Incorporeal Form. The Super Incorporeal Form is the Spiritual Temple which is the more glorious structure or edifice which is Elohim or the Word of Yahweh, and the Tabernacle is the less glorious structure which represents the physical man or Yahshua the Messiah. However, as the Super Incorporeal Elohim and the Intangible Tabernacle are one and the same, so is the Temple and Tabernacle the same. If therefore, the man is a physical Tabernacle he is also a physical Temple. So, after the Israelites had built the physical Tabernacle and had followed it around and finally came to Canaan Land, they had to build a more glorious edifice or building know as Solomon's Temple which they constructed in Mount Moriah. The Pattern of this Temple was given to David in a Vision by Elohim passing His hand over David's physical body and showing him how to build the Temple by his own physical anatomy and physiology. David wrote about this thusly, "All this," said David, "Elohim made me understand in writing by His hand upon me, even all the works of this Pattern"(1 Chr. 28:19, K.J.V.).

Elohim, the Immortal King in Heavenly Jerusalem just laid His Super Incorporeal Body over David's physical body (David being

King in the earthly Jerusalem) in a Vision and made him to know how to build the Temple which specifications he passed on to his son, Solomon who built the Temple. After the Temple was constructed, then the weather-beaten Tabernacle which stood out on Mount Zion was dismantled and all of the furnishings were moved into the Temple just as Moses had seen it drawn out of the Temple in his Vision.

The Apostle Paul speaking of this wrote, "For we know that if our earthly house of this Tabernacle were dissolved, we have a building of Elohim (the Temple) a house not made with hands, eternal in the heavens. For in this (our physical Tabernacle) we groan earnestly desiring to be clothed upon with our house which is from heaven" (*2 Cor. 5:1-2, H.N.B., K.J.V.*). And the Apostle Peter wrote in this manner, "Yea, I think it necessary, as long as I am in this Tabernacle, to stir you up by putting you in remembrance; Knowing that shortly I must put off this my Tabernacle, even as our Saviour Yahshua the Messiah hath showed me" (*2 Pet. 1:13-14, H.N.B.*).

So when we examine Solomon's Temple we find that it was built on Mount Moriah and one had to go up into the Temple from one part to another. It was a three-fold structure just as the Tabernacle, being composed of a Porch (Outer Court), a Sanctuary (Holy Place) and an Oracle (Most Holy Place). The Porch was at the lowest level, the Sanctuary was higher up, and the Oracle was at the highest part of the Temple. The whole structure was fashioned like unto a man sitting on a throne. The Two Great Pillars (Joachim and Boaz) that flanked the entrance to the Porch are likened unto the legs of a man in a sitting position. The Porch itself would be likened unto his thighs, the Sanctuary would be likened unto the region of the hips to the neck, and the Oracle with its rounded dome would be likened unto the head region of a man. And the Temple being overlaid with gold without and within pertains to the glorious excellence of the Spiritual Edifice or Body, the inner cavities of man's physical body is lined also with a

glistening gold-appearing layer depicting the excellence of the inner man or the Soul.

In confirmation of all that Moses SAW in his Vision, the Apostle John (shown on the inner cover) was on the Isle of Patmos as a witness, and he described the same Super Incorporeal Form of a man that Moses SAW, and he likened it unto the Tabernacle. His description of this Man (Elohim) fits the Tabernacle exactly. He said that he SAW One like unto the Son of Man clothed with a garment down to his feet, (likened unto the coverings of the Tabernacle), and girt about the paps with a golden girdle (likened unto the vessels of gold in the Holy Place and Most Holy Place).

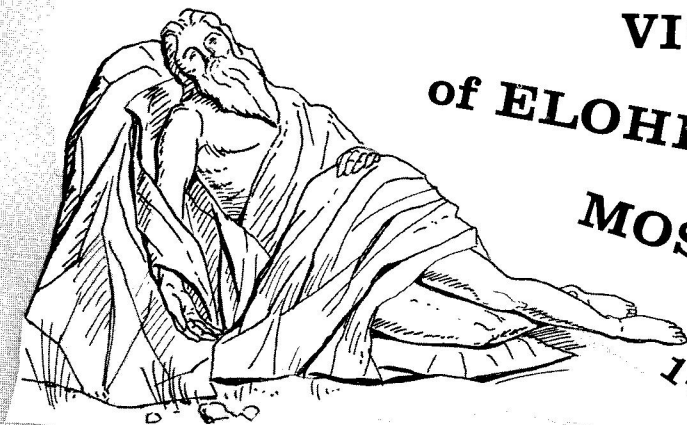
John further said that his head and his hairs were white like wool, as white as snow (likened unto the cloud above the Mercy Seat in the Most Holy Place) and his eyes were as a flame of fire (likened unto the Shechinah or glorious image of Light that the High Priest witnessed in the Most Holy Place in the Cloud); and his feet like unto fine brass (likened unto the vessels of brass in the Outer Court of the Tabernacle), as if they burned in a furnace (likened unto the Fire on the Brazen Altar in the Outer Court). And John said that when he SAW HIM he fell at his feet, as dead, and that he had his right hand upon him (*Rev. 1:8-18, H.N.B., K.J.V.*). Thus, John confirms Moses' description of the Super Incorporeal Form transforming itself into an Intangible Tabernacle, and he describes it as a Man.

John further stated that he was given a REED like unto a ROD and was told to rise and measure the Temple of Yahweh, and the Altar (Altar of Sacrifice) but to leave out the Outer Court (*Rev. 11:1-2, K.J.V.*). And that is exactly what we are doing in this treatise for we are measuring and comparing the Temple and Tabernacle or the Divine Pattern or the Rod with man's physical body, but since we understand that the physical things are only types and shadows of the Spiritual things, we leave out the flesh or the Outer Court.

The Apostle John also spoke of seeing the Temple of the Tabernacle of Yahweh opened in Heaven, and the Temple was filled with smoke from the Glory of Yahweh, and from His Power, and this perfectly fits Moses' seeing Elohim breathe into the nostrils of Adam the Breath of Life (smoke) and he became a Living Soul, typifying the inner man (*Rev. 15:5-8, H.N.B., K.J.V.*). John furthermore witnessed the crucifixion of Yahshua the Messiah (the fleshly Tabernacle or Temple) at age thirty-three (33) years, just as Moses witnessed Yahweh telling him how to construct the Tabernacle and how it was to function throughout the remaining thirty-three (33) days of his Vision in the Mount after he had witnessed the Creation of the Universe in six (6) days and SAW Yahweh rest on the seventh (7th) day, he was in the Mount a total of forty (40) days. Likewise, Solomon's Temple stood unmolested for thirty-three (33) years before it was pillaged by Shishak from Egypt. Hence, man's physical body has thirty-three (33) vertebrae which cause him to stand erect or upright just as Yahshua the Messiah was our Redeemer and stood us upright in the eyesight of Yahweh. And as He picked twelve (12) disciples to minister with Him in fulfillment of the Twelve Heads of the Tribes of Israel gathered around the Tabernacle in the Wilderness, this made twelve who functioned in the Dispensation of Grace (the Apostles) hence, the Apostle John spoke of the twenty-four (24) Elders around the Throne of Yahweh (*Rev. 4:4, H.N.B., K.J.V.*). Therefore, the physical man must have twelve (12) ribs on one side of his body and twelve (12) ribs on the other side, making a total of twenty-four (24) ribs gathered around the vertebral column.

And in the last chapter of Revelations, John wrote of seeing a Pure River of Water of Life proceeding out of the Throne of Yahweh and the Lamb (*Rev. 22:1, H.N.B., K.J.V.*). How beautifully does this compare with the crystal clear cerebro-spinal fluid that proceeds out of the Brain and courses on down through the Spinal Cord. Truly, man is made in the Likeness and Image of Yahweh Elohim.

**Panoramic
VISION
of ELOHIM to
MOSES**



1490 B.Y.

**MOUNT SINAI
IN
ARABIA**